

GENERAL NOTES

- "All taking down and removals to be carefully undertaken in accordance with Conservation Specifications by David Slattery Conservation Architects."
- "Surviving original multi-pane sash windows to link building to be carefully conserved, retaining single panes of glass in accordance with Conservation Specifications by David Slattery Conservation Architects."
- "Non-original 20th Century sash windows to Seminary to be applied where beads and half cills are damaged. New aluminium double glazed units to be fitted into existing casings. All in accordance with detail drawings showing glazing by profile impact and Conservation Specifications by David Slattery Conservation Architects."
- "All services to Seminary to reuse existing routes where possible with any new routes and installations to be carried out in accordance with Conservation Specifications by David Slattery Conservation Architects."
- "Minor repairs to leaded and stained glass in Assembly Hall are limited to repair of opening sections and glass replacement where panes are broken. No storm or secondary glazing proposed. All to be carried out in accordance with Conservation Specifications by David Slattery Conservation Architects."
- "Stained glass over front entrance to chapel is set in a timber frame and is to be carefully removed to agreed location in accordance with Conservation Specifications by David Slattery Conservation Architects."
- "Slate roofs to Seminary and Chapel to be restored using Blue Bangor slate and shopped lead valleys in accordance with Conservation Specifications by David Slattery Conservation Architects."
- "All cast-iron rainwater goods to be retained and renewed with any replacements where goods are beyond repair to be in cast iron. All in accordance with Conservation Specifications by David Slattery Conservation Architects."
- "Render to be lightly cleaned with dilute biocide in accordance with Conservation Specifications by David Slattery Conservation Architects."
- "Limestone strings and cills to be carefully cleaned using Duff or similar steam cleaning - no abrasive or chemical cleaning. All in accordance with Conservation Specifications by David Slattery Conservation Architects."
- "Granite cills, copings etc to be carefully cleaned using a light calcium carbonate abrasive in accordance with Conservation Specifications by David Slattery Conservation Architects."
- "Wholesale repointing is not required and localised pointing where necessary will be carried out using a lime (MKL3) mortar and aggregate and lime mix to match existing bedding mortar tone and texture. All in accordance with Conservation Specifications by David Slattery Conservation Architects."

DRAWING LEGEND

EXISTING

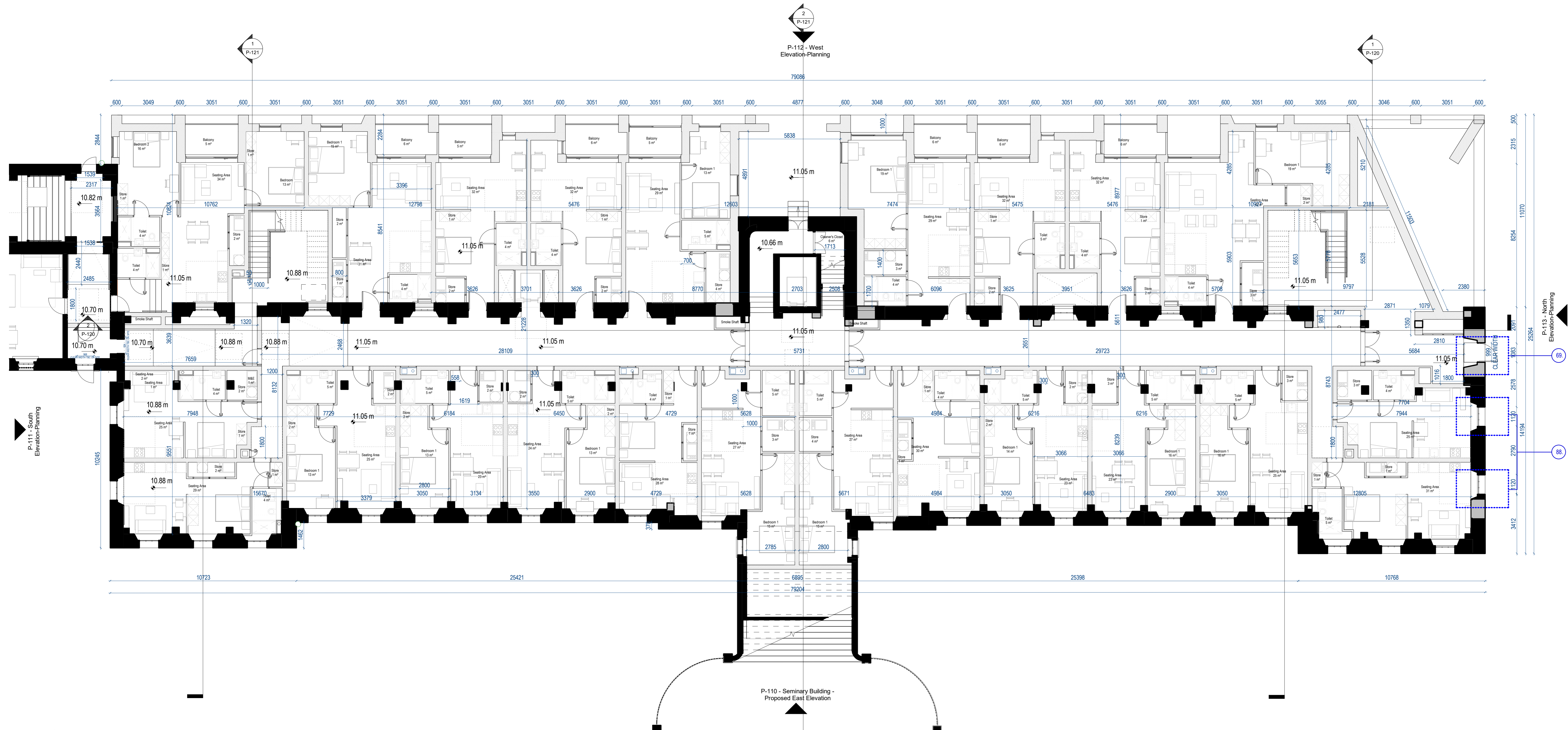
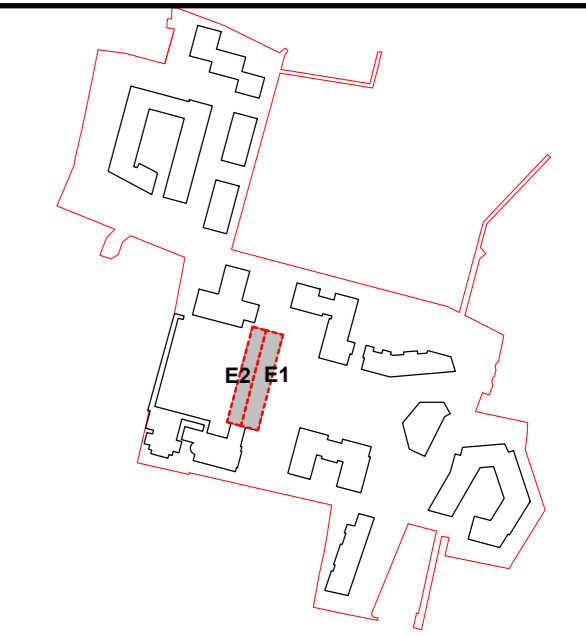
PROPOSED

ALL DIMENSIONS TO BE CHECKED ON SITE
NO DIMENSIONS TO BE SCALED FROM THIS DRAWING
DRAWING IS TO BE READ IN CONJUNCTION WITH RELEVANT CONSULTANTS DRAWINGS

A0

N

1



1 Ground Floor - No Anno
Scale: 1:100

| | | | | |
|-----|--------|---|----|-----|
| P2 | APR 21 | Issued for Planning | DT | SP |
| P1 | NOV 20 | Issued for Pre-Application Consultation | DT | IB |
| REV | DATE | DESCRIPTION | DT | DRN |

STATUS CODE DESCRIPTION

ISSUED FOR PLANNING APPROVAL

APPLICANT NAME

CWTC Multi Family (CAV) acting on behalf of its sub-kind DBTR DR1 Fund

PROJECT NAME

166, Cross College, B20

LOCATION

Holy Cross College, Carville Road, Dublin 3 and Drumcondra Road Lower, Drumcondra, Dublin 9

DRAWING

Seminary Building - Proposed Ground Floor Plan

| | |
|-------------------------|---------------|
| PROJECT NUMBER | DATE |
| CLN-MCM-00-ZZ-MS-A-0003 | 06/02/20 |
| SCALE @ A0 | DRAWN/CHECKED |
| As indicated | IB / ROC |

| | | |
|-------------|--------------------------|----------|
| STATUS CODE | DRAWING NUMBER | REVISION |
| A1 | CLN-MCM-E1-ZZ-DR-A-P-100 | P2 |

Henry J Lyons
Architecture + Interiors
henryjlyons.com

VIRTUS

O'Donnell+Tuomey

mcculloughmulvinarchitects

NMP
Niall Management + Planning

o mahony pike

BM
BARRETT MANDY

OCSC

